

Loose Wheel Nut Indicator

CHECKPOINT



Automotive



CHECKPOINT

Get more safety with the “Millennium Award” winning Checkpoint indicator for loose wheel nuts and bolts on.



The innovative system is geared towards the requirements of an active fleet management, with control and documentation of the state of safety-critical nuts, bolts and other fasteners.

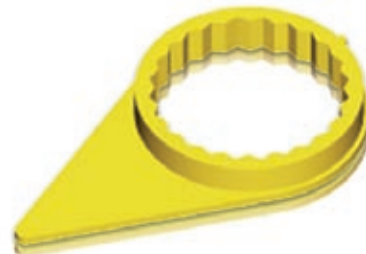
Checkpoint is suitable for commercial vehicles and buses of every type.



Product details

Checkpoint®

Checkpoint® is a loose wheel nut indicator used by the transport industry for enhancement and development of fleet safety roadworthiness procedures. Its use allows accurate monitoring for loose wheel nuts during the daily walk-around inspections and routine vehicle checking in the workshop and helps prevent wheel hub damage or the loss of a road wheel should a wheel nut loosen.



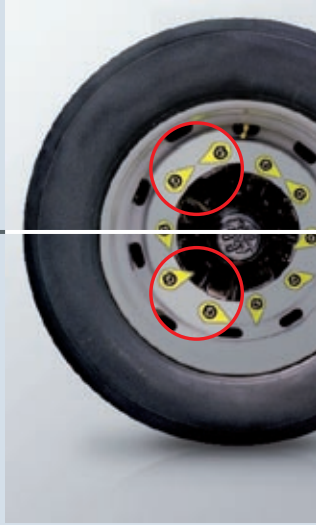
Checktorque®

This wheel nut indicator is a clear visual reminder for the mandatory final checking of the tightening moment of the wheel nuts after a given period of time or distance travelled.



The solution you can rely on!

When the wheel is mounted, the Checkpoint indicators are aligned to the adjacent unit via a snap fit.



Any movement of the wheel nut will be clearly evident.



BENEFITS

- Inexpensive solution preventing the loss of a wheel
- Improves the maintenance and safety of the entire vehicle fleet
- Better control of the budget and reduction of cost
- Easier control of the wheel nuts by the driver with implicit benefits for the roadworthiness of the vehicle
- Visually shows that the vehicle fleet is in safe and in roadworthy condition
- Alert signal for the fleet manager and driver, avoiding brake problems and damage of the wheel bearings



Dustite® LR

The Dustite® LR is a wheel nut dust cap indicator for use where wheel trims with wheel nut access holes have been fitted. Until now, the fitting of a wheel trim has made it difficult to effectively use the standard loose wheel nut indicator products.

The Dustite® LR design allows the indicator wheel nut cap to be mounted on the wheel nuts through the access holes in the trim. The indicating pointers can be aligned on the outer surface of the trim and be visible at all times for walk-around safety and roadworthiness inspections and zero defect reporting.



Checklink®

Checklink® is a link between wheel nuts. Its function is to hinder the continuous movement of a wheel nut which is coming loose by linking the wheel nuts to one another. Furthermore, the shape of the link is visibly changed by the pressure which is put on it by the movement of the nut coming loose. In addition, the checklink by linking wheel nuts to one another prevents a loose wheel nut from being catapulted away from the wheel bolt. Checklink is a vital element in proactive risk management for the operation of vehicle fleets. At the same time, it clearly shows the importance the company attaches to road safety.

CHECKPOINT

CHECKPOINT®

Ref. No.	Diameter	PU	Vending unit
561 25 00	27 mm	100 pieces	1
561 25 10	30 mm	100 pieces	1
561 25 20	32 mm	100 pieces	1
561 25 30	33 mm	100 pieces	1

CHECKTORQUE®

Ref. No.	Diameter	PU	Vending unit
561 25 50	27 mm	100 pieces	1
561 25 60	30 mm	100 pieces	1
561 25 70	32 mm	100 pieces	1
561 25 80	33 mm	100 pieces	1

CHECKLINK®

Ref. No.	Diameter	PU	Vending unit
561 26 00	32 mm	100 pieces	1
561 26 10	33 mm	100 pieces	1

DUSTITE® LR

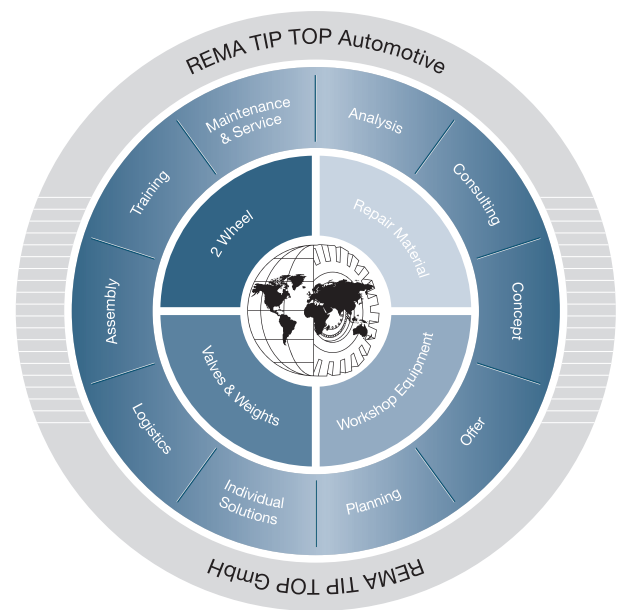
Ref. No.	Diameter	PU	Vending unit
561 26 20	32 mm	50 pieces	1
561 26 30	33 mm	50 pieces	1

The pictures shown in the brochure may differ from the delivered equipment and include optional accessories. For detailed information on optional accessories, please request the respective brochure or visit us at www.rema-tiptop.com.

We manage your workshop

One brand – One source – One system

REMA TIP TOP is synonymous for first-class products, systems and services from a single source. We convince our customers by our progressive technology, landmark innovations and a world-wide service network.



Your local contact:

REMA TIP TOP GmbH Business Unit Automotive

Gruber Straße 63
85586 Poing/Germany

Tel.: +49 81 21 707-234
Fax: +49 81 21 707-222

www.rema-tiptop.com
info@tiptop.de